



Wellness-, Golf- & Seminarhotel
6390 ENGELBERG • SCHWEIZ • SUISSE • SWITZERLAND

Conference Documentation



Meetings in Engelberg...
... a little bit closer to heaven



Seminar participants and guests adjourn here for some «time out», in order to learn, to come together, to exchange views, and to deepen their knowledge and relationships. Ever since medieval times, Engelberg has had a magical attraction for the monks of the Benedictine monastery. The creative atmosphere has nurtured intellectual encounters for hundreds of years. But it is not only this special energy that will liberate you. We will take care of your professional requirements, with our specially adapted infrastructure, and wonderful atmosphere.

I'm looking forward to meeting you

Manolito Birrer
Your Host

Location and Facilities

The hotel has a wonderful, south-facing position above the rooves of Engelberg. Most rooms have south-facing balconies and a view of Mount Titlis. Bar, sun terrace, Siam-restaurant with creative and light delectable. Wellness area with an alpine wellness pool. A wide palette Wellness exercises round off the range. All seminar rooms have plenty of natural daylight and are positioned to face to the surrounding mountains.

How to find us

After entering Engelberg, follow the main road to the monastery. Now please follow the hotel signs: turn left before the monastery and at the Valley Museum (Talmuseum) turn right into Schwandstrasse.

Arriving by car

Take the motorway: Autobahn A2 Luzern-Gotthard, Exit Stans-Süd, head for Engelberg.
from Bern approx. 1 ¼ h
from Basel approx. 1 ½ h
from Zürich approx. 1 ¼ h

Arriving by train

From Lucerne the Zentralbahn train takes one hour. We can pick you up from the station in Engelberg.

Arriving by plane

From Zürich Kloten airport or Basel Mulhouse, you can get to us by train or car.



The conference rooms



Panoramasaal



Waldeggsaal

Meeting room	Area in m ²	Seating Capacity				
		Concert/Theater	Parliament	U-Shape	Block	Apéritif
Panorama	144	120	70	35	38	120
Spannort	84	60	30	26	30	60
Titlis	60	40	20	20	24	40
Waldegg	76	48	30	20	24	48
Hahnen	32	25	--	--	12	--
Grouprooms	20 - 24	15	--	--	10	--

All rooms have natural daylight and a view of the surrounding mountains.

Seating arrangements

Concert / Theater



Parliament



U-Shape



Block



Apéritif



Free WLAN in the whole hotel

We want to offer our guests the best possible service. So that you can be online during your seminar, we have free WLAN in the hotel. Just ask for the password at the reception.

Conference day package (up to 10 persons)	CHF	99.00
- Rental of plenary room with basic technical equipment (1 flipchart with paper pad, 1 pin wall, 1 beamer, 1 presenter's case, Wireless LAN, Memo pad and pen for each participant)		
- 2 coffee breaks with coffee, tea, orange juice, fruit and pastry		
- Mineral water in the meeting room		
- 1 business lunch (2-course) with a choice of main course		
 Conference half day package (up to 10 persons)	 CHF	 79.00
- Rental of plenary room with basic technical equipment (1 flipchart with paper pad, 1 pin wall, 1 beamer, 1 presenter's case, Wireless LAN, Memo pad and pen for each participant)		
- 1 coffee break with coffee, tea, orange juice, fruit and pastry		
- Mineral water in the meeting room		
- 1 business lunch (2-course) with a choice of main course		
 Evening meal, (3-course) with choice of main course	 CHF	 39.00
Evening meal, (4-course) with choice of main course	CHF	49.00
Welcome coffee with croissants	CHF	9.00

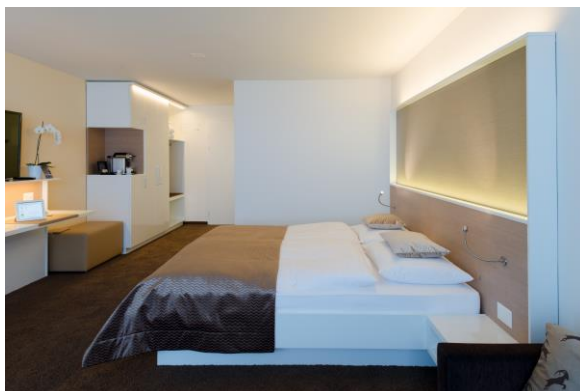
Accommodation rates

- Accommodation in a spacious room with bath/toilet, radio, TV, telephone, minibar and south-facing balcony
- A rich Waldegg breakfast buffet
- Free use of the Wellness-Paradise with Alpine wellness pool (neck wave jet, massage nozzles, whirl pool, Finnish sauna, Odorium, steam bath, Kneipp footbath, adventure shower, Wellness Bar with fruits, tea and mineral water all day, quiet- and fitness room, beauty center and massage studio)

Price per person incl. taxes (plus: Tourism tax CHF 3.20 per person /night)	Summer April - November	Winter December - March
Category Superior Double room for single use Twin room	CHF 260.00 CHF 160.00	CHF 290.00 CHF 190.00
Category Standard Double room for single use Twin room	CHF 160.00 CHF 130.00	CHF 190.00 CHF 160.00

These overnight prices are only valid up to 10 persons and only with a conference day package.

Weekend supplement CHF 20.00 per person and night (December until March -> Friday & Saturday)



Category Superior



Category Standard

Conference room rental

Rooms	Half Day	Whole Day
Panoramasaal	400.00	600.00
Waldegg	250.00	400.00
Spannort	250.00	400.00

Rooms	Half Day	Whole Day
Titlis	250.00	400.00
Group rooms	150.00	200.00

Additional technical equipment

	Rental per day and per piece	
Additional pin wall	CHF	25.00
Additional flipchart with paper pad	CHF	25.00
Additional presenter's case	CHF	35.00
Additional Beamer	CHF	150.00
Cassette or CD player with speakers	CHF	35.00
DVD player	CHF	35.00
Loudspeakers for laptop	CHF	35.00
Microphone (cableless)	CHF	60.00

More technical tools on request.

Additional Services

Bus transfer to and from the train station in Engelberg with 8 seater bus, free for arrival and departures. Additional transportation during your stay is CHF 15.00 each way.

Culinary Delights

We place importance on serving light food during seminars. To do this, we use the freshest of products. All guests always have the option of a vegetarian selection. Additionally, specially selected wine is served from our superb wine cellar.

Peace and Relaxation

60 generous, comfortable rooms with unique panoramic views over the surrounding mountains, equipped with telephone, minibar, cable TV and wireless LAN, we will make sure that you sleep well.

Sport and Culture

The unique location of Engelberg offers a wide palette of sporting and cultural activities. You can go skiing, sledge, snowshoeing, prove how brave you are on a Trust and Team trip or Flying Fox, or visit the infamous Benedictine Monastery. We would be only too happy to help you put together a frame programme.

Wellness

Relax in the modern wellness pool with a neck wave jet, massage nozzles, and whirlpool. You'll find a Finnish sauna, Odorium, steam bath, Kneipp footbath, 'adventure' shower, Wellness Bar, quiet and fitness rooms.



Organiser _____

No. of persons _____

Event from _____ to _____

Telephone _____

Contact person _____

Fax _____

Seminar leader _____

Billing person _____

Address _____

Address _____

Postcode, City _____

Postcode, City _____

Number of rooms

Single rooms _____

Twin rooms _____

Conference package

4-course dinner / 3-course dinner

Day package with lunch

½ Day package with lunch

Seating arrangements Equipment

U-shape

Block table

Parliament seating

Seated circle

Theater seating (without tables)

Table rows

Deposit tables

Presentation table

Lectern

Additional technical equipment

Additional pin wall

Additional flipchart with paper pad

Overhead projector

Additional presenter's case

Additional Beamer

Cassette or CD player with speakers

DVD player

Loudspeakers for laptop

Microphone (cableless)

Cost key

MA = Master account

SP = Self pay

Overnight stay _____

Conference package _____

Pre arrival _____

Accomm. Extension _____

Visitor's Tax _____

Garage _____

Drinks with meals _____

Bar _____

Extras _____

Frame programme _____



The Small Print

Cancellations	When a definitely-booked seminar is cancelled by the client, we have to charge the following percentages to your account to cover our costs. Cancellation up to 45 days before the event: no charge Cancellation 45 to 31 days before the event: 25% of the confirmed services Cancellation 30 to 15 days before the event: 50% of the confirmed services Cancellation 14 to 0 days before the event: 100% of the confirmed services 10% of the booked rooms can be cancelled up to 24 hours before your arrival without any charge.
Confirmation	After the counter-signature of your confirmation the booking is binding.
Frame programmes	For frame programmes which are organized through us, we charge a commission of 10%.
Form of payment	We kindly ask you for a 50 % prepayment 15 days prior to the event. The other 50 % will be charged to the credit card on the departure date.
Contract components	Please be aware that this document is an integrated part of the contract.



Wellness-, Golf- & Seminarhotel

6390 ENGELBERG • SCHWEIZ • SUISSE • SWITZERLAND